

# RotonTEK

Low Noise Motor Transmission Solution

## Electric pallet truck drive assembly



# P10



Youtube





## COMPANY ADVANTAGES

## COMPANY PROFILE

Rotontek Intelligent was established in July 2008. It is an innovative high-tech enterprise focusing on independent research and development and production. With motor control, intelligent manufacturing and other technologies as the core, it is committed to electric screw jacks, motor transmission solutions, and electro-hydraulic pump system, intelligent aging products and other series. The products are widely used in tourism RVs, recreational vehicles, logistics, cleaning, unmanned boats, rehabilitation, fitness equipment and other industries. Continuously provide innovative solutions to our customers.

Is headquartered in Zhongshan City, with R & D centers and production bases in Guangzhou, Guilin and Taishan. At present, there are more than 200 employees, and more than 50% scientific and technological personnel. Company has 4 invention patents, more than 50 utility models and 10 appearance patents, and 11 provincial-level high-tech products. It is the industry-university-research cooperation base of Zhuhai College of Beijing Institute of Technology, Guilin University Of Electronic Technology and Zhongshan Polytechnic etc..

In 2021, we were awarded as a national "Specialized and Special New" Little Giant; we have exclusive technological and market advantages in the segment of motor transmission system and electro-hydraulic systems

We always take "intelligent technology to help a better life" as our mission, pay attention to customer needs and create customer value continuously.

- ▶ **50<sup>+</sup>** Excellent engineers team  
20+ technical patents, strong technical strength, and Short Development Period.
- ▶ **50<sup>+</sup>** US/Germany imported advanced CNC processing equipment  
Strong processing ability, high product accuracy and stable quality, short production and processing cycle, fast batch delivery.
- ▶ **Automated production equipment and facilities**  
Motor automatic production line, CNC machining manipulator, welding robot, etc., high efficiency and low cost.
- ▶ **Perfect quality management monitoring system**  
Passed the ISO quality management system certification, with three coordinates, twodimensional space, gear comprehensive tester, Advanced testing equipment such as dynamometer and motor comprehensive testing.

**200<sup>+</sup>**

200 professional staff

**ISO**

Quality System Certification

**46455<sup>m<sup>2</sup></sup>**

Single storey area 5270m<sup>2</sup>



# (750W-1000W) STRONG POWER



Original self-developed motor, strong power, wide range application.

**POWERFUL POWER**  
Easy working

**HIGH EFFICIENCY**  
Go farther

**QUIET MOTOR**  
With less than 60dB

  
**LOW NOISE**  
≤60dB

  
**High Precision Gear**  
Alloy steel hard tooth surface gear

  
**Long battery life**  
Energy saving and electricity saving

  
**Electromagnetic Brake**

  
**High security**

  
**Customized on demand**

## 750W-1000W Electric drive wheel

This series of products integrates a high-efficiency motor, a low-noise reduction mechanism and a driving power unit with high-strength travel wheels. It has many advantages such as compact structure, easy installation, strong load-bearing capacity, large driving force, stable operation, etc. It is mainly used in driving wheel parts of various vehicles powered by batteries, such as electric forklifts, AGV logistics transfer vehicles, electric transport vehicles, electric tractors, etc. It is a new generation of high-efficiency, energy-saving and environmentally friendly products. It can meet various working conditions such as heavy-load starting, full-load climbing and high-speed operation on flat roads.



750W  
Brushed electric drive wheel

Rated voltage	Rated power	Rated current	Rated speed	Maximum towing weight	No-load current	No-load speed	Work system	Brake torque
DC 24V	750W	41A	2650rpm ±10%	2.7Nm	5.3A	3200rpm ±10%	S2-45min	6Nm



850W  
Brushless electric drive wheel

Rated voltage	Rated power	Rated current	Rated speed	Maximum towing weight	No-load current	No-load speed	Work system	Brake torque
DC 24V DC 48V	850W	44.5/ 22.3A	2650rpm ±10%	3.06Nm	5.3A	3200rpm ±10%	S2-60min	6Nm



1000W  
Brushless electric drive wheel

Rated voltage	Rated power	Rated current	Rated speed	Maximum towing weight	Speed ratio (I)	Maximum load	wheel diameter	Brake torque
DC 24V	1KW	50A	2300rpm	4000KG	1:29	1000KG	406x100mm	6Nm

## Drive Controller

This series of products adopts sine wave vector control and algorithm, and is designed for electric scooters, electric dollies, cleaning machines, karts and other electric vehicle motor control. It has anti-skid and electromagnetic braking functions to improve driving safety. It has overvoltage, overcurrent and overheating protection functions. It uses TI's DSP chip, which has excellent performance and strong anti-interference ability. It uses internationally renowned brand MOS tubes, which have high efficiency and good stability.

ID200



2KW DC Permanent Magnet Brushless Controller

Rated voltage	Continuous current	Peak current	CAN/SCI communication	Size
DC 24V/36V/48V	60 min <sup>1</sup> 60A 1 min <sup>2</sup> 100A	10 sec 140A	YES	189x102x54mm

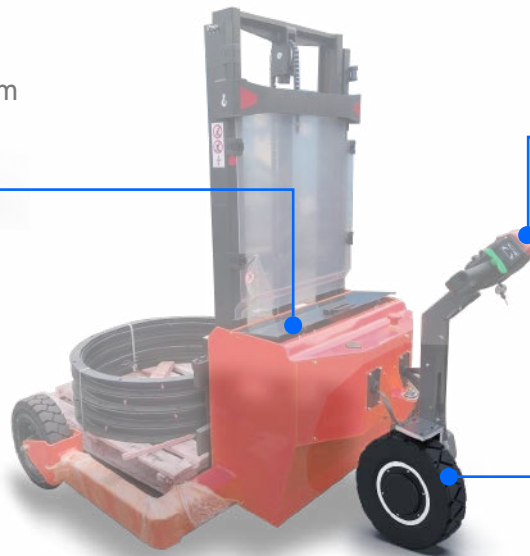
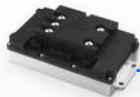


24-48V 100A两个电机



## Electric pallet truck drive assembly

Control System



Tiller head



Driving system

ZHONGSHAN ROTON INTELLIGENT TECHNOLOGY CO.,LTD

+86-18022183568

richh@rotontec.com

19 Renqian Road, Sanxiang Town, Zhongshan City, Guangdong Province, China